

# Wisconsin Laborer

Fall 2016



Labors' International Union of North America  
**LiUNA! BUILDS AMERICA**



*Inside:*

The State of our Union is strong,  
Members need to be active in their local  
Unions *pg. 2*

Dues are the Bricks and Mortar of the Labor Movement  
*pg. 3*

Congrats to WI Laborer apprentice graduates, *pg. 8*

2017 Accuplacer testing dates - 2017 Local Membership  
Meetings *pg. 11*

Honoring Wisconsin Laborers for their years of service  
*pg.12 ,13,14*

# Business Manager's Report: The State of our Union is strong, Members need to be active in their local unions. By John Schmitt, Business Manager



Brothers and Sister,  
Winter will soon be here and I would like to reflect for a moment the 2016 construction season. We started out 2016 by kicking off the Wisconsin Laborers Health Reimbursement Account or HRA program. As of June 2015, through collective bargaining, there was an increase of \$0.25 in the Health Fund from \$7.80 to 8.05. That \$0.25 increase for every hour worked, went into your HRA account. In January 2016 all members who were eligible for health insurance received an HRA packet that included two benefit cards. These cards are visa debt smart cards and can be used for co-payments, prescriptions, dental, vision, and much more. You can also use your HRA if you ever have a self-pay, to become eligible for the next quarter. For more information about your Health Reimbursement Account and other services of our health plan please go to [www.wilaborers.org](http://www.wilaborers.org) under member services or please contact Zenith Administrators at 608-846-1742 or toll free at 1-800-397-3373.

The State of our Union is strong. Work hours and investments have been good, keeping our Health & Pension

funds strong. From January 1<sup>st</sup>, 2016 to October 31<sup>st</sup>, 2016 our union had 46 Wisconsin Laborers graduate from the apprenticeship program. For those not familiar with our apprenticeship program, the State standard for a Construction Craft Laborer is 4000 hours on the job and 400 hours of classroom. Congratulations to all of you for staying focused and accomplishing this milestone in your career as a Union Laborer! Currently there are 313 active apprentices in Wisconsin Laborers apprenticeship program that are working for our signatory partners. The 2016 Accuplacer testing conducted by Wisconsin Laborers Apprenticeship Coordinator Ray Wiatt, resulted in 1033 applicants Statewide. Those are very impressive numbers that show that our relationships with community partners, along with our involvement in career fairs and school education events are resonating with individuals. If there was more work out there and more interest from our signatory partners to employ apprentices we can meet those needs. From June 1<sup>st</sup>, 2015 to May 31<sup>st</sup>, 2016 the Wisconsin Laborers Training Center had 2,429 trainees attend and complete classes, knowing that expanding and improving their skills strengthens the value a laborer brings to their signatory contractor, which usually equates to more work opportunities. Once again a big thanks to Wisconsin Laborers Apprenticeship and Training Staff for all their hard work.

As Union members we need to be engaged and active in our Local Unions. No matter who's in office, democrat or republican, we will continue to defend the founding principles of our nation and our union to ensure that regardless of race, heritage, or gender every working woman and man has an equal opportunity



to succeed and prosper. LIUNA will not be deterred in our efforts to fight for an aggressive agenda to increase infrastructure investment, define smart energy policy, defend prevailing wages, repeal the Cadillac tax, enact pension reform, protect all worker's rights, and win comprehensive immigration reform.

We have a busy 2017 season ahead of us! If you ever have any questions about upcoming contract negotiations or legislative issues at Local, State, or Federal government levels, please call the Wisconsin Laborers District Council or your Local Union. I wish you and your family a safe and happy holiday season.

Wishing You A Happy Holiday Season



**LiUNA!**  
Feel the Power

**Wisconsin Laborers District Council  
And  
Its Affiliated Local Unions  
And  
Wisconsin Laborers Training Center  
Are all on facebook**

**We also have membership resources  
online at: [www.wilaborers.org](http://www.wilaborers.org)**

## What my dues go for, and how it benefits me in the form of good wages and benefits

As a member of the Laborers' Union in Wisconsin, there are two types of dues that you pay. There are monthly flat-rate membership dues and hourly working dues. Dues are the Bricks and Mortar of the Labor Movement. Dues provide the resources for Union leaders and members to stand up for good jobs and benefits, decent working conditions and a better future for our families. That's why union members in the private industry earn 38 percent more on average than nonunion workers. Union members also receive 54 percent more in benefits. None of this would be possible without the strength that comes from everyone paying their dues. Union Labor in the construction industry means you are the safest, most skilled, and most productive workforce out there. You have the opportunity to utilize the Wisconsin Laborers' Training Center to keep your skills up to date. And in return for being the most skilled, safe, and productive workforce, you look for compensation in the form of family supporting wages, paired with great health and retirement benefits. If you attend your Local Union's monthly meetings, you are part of the democratic process which votes on what your Local spends money on, so you already have a basic understanding of the value of dues. But not everyone can make their monthly union meeting, so here are a few examples of the areas/programs that benefit from dues:

- **Organizing.** The primary job of Union Organizers in the construction industry is to reach out to owners of non-signatory companies to explain the many benefits of being Union. They also talk to non-union workers to explain what they're missing, many times hearing examples of wage theft and dangerous working conditions. These activities help grow our Union in membership and in market share, creating more work opportunities for our members. Organizers also assist Local Unions in various ways to protect our market share, such as job actions or informing the public on why Union is the best!
- **Defense Fund.** A portion of your dues goes into the Wisconsin Laborers District Council Defense Fund. The defense fund is offered to our signatory contractors as a commitment of assistance ahead of the bidding process, when competing against non-signatory contractors. This benefits our signatory contractors in getting contract awards, which equates to more work opportunities for our members. Some Locals have their own Local defense fund, which allows locals to target projects within their local's jurisdiction more aggressively.
- **Collective Bargaining Agreement.** As an employee of a Union Contractor, you have the protections and guarantees of many benefits that are listed in your Collective Bargaining Agreement or CBA. These protections and benefits include: working conditions, grievance and arbitration, workers comp and unemployment insurance, wage and benefit increases, workday and workweek standards, protections of jurisdiction, hiring hall rules, just to name a few. CBA's are contracts that have term limits and are renegotiated towards the end of the CBA. The cost for negotiations along with the cost of the protections in the CBA are all paid from working dues.
- **District Council and Local Union Representation.** There are many things that fall under representation. It would include Labor board and arbitration expenses, legal protections, affiliation fees, supporting fair Labor legislation, staff wages and fringes, insurances, necessary paperwork, office supplies, and general bills (phones, gas, electric, water, rent etc.). The Local Unions provide many great activities for members such as: Retiree's Luncheons, years of service events, Holiday Events, food served at monthly meetings, Meeting attendance awards, and much more. Membership communications, such as this Newsletter, are paid by working dues. All of our online services at [www.wilaborers.org](http://www.wilaborers.org) are paid with working dues.
- **Marketing the Union Business Model.** In a divided government such as ours, there is a lot of misunderstandings about Unions. Part of your dues goes towards educating the public by not just telling, but showing. We are members of communities all over the State. We work hard and just want a fair days pay for a fair days work. We are veterans, we coach our kid's sports, and we volunteer in our communities. We care about the environment no less than others and because we work in the industry, we know what precautions are being done to protect our environment. Because of our working dues we have given to many great organization such as: Make a Wish, Breast Cancer, Special Olympics, MDA, Juvenile Diabetes, Autism Society, United Way, Red Cross, American Veterans, Union Sportsman's Alliance, and local area food pantries. Members have come up with many other great ways to give back to our communities donating their labor to build playgrounds, river clean up, build baseball dugouts for local schools, and much more.
- **Laborers C.A.R.E.** This charitable fund was created to assist the families of LIUNA members who have been seriously injured on the job and are unable to work, or in the most unfortunate circumstance, loss of life while working as a Laborer. Laborers' CARE offers immediate financial support (up to five thousand dollars) to ensure an individual's short-term obligations are met, i.e. - The rent is paid, food is in the house and of course the needs of children are met.

**We hope this has been informative and please call the Wisconsin Laborers District Council or your Local Union with any questions. We want engaged members, our strength is in numbers. SOLIDARITY**

# Local News

**Local 113 Milwaukee  
Business Manager Tony Neira**



Brothers and Sisters,  
Work in our 113 area has been good with some of the bigger projects like the Milwaukee Bucks Arena, Zoo Interchange Project, North Western Mutual Headquarters and Mixed-Used Tower, Westin Hotel, 833 East Office Building, along with many other developments. These projects have generated a lot of work for our members. The approaching new year looks like it will be another decent year for work with the continuation of 2016 Projects including; the Street Car Project, which was awarded to Kiewit, another mixed-used tower, a \$122 million project, the 44 Story Couture Project. There are also talks of more development to come.

To all the members that enrolled at our Training Center for classes, thank you. Not only are you benefiting yourself and the contractors, but broadening your skill sets should allow you more work opportunities, which will help you provide for your families. Many jobsites are, or will be, requiring mandatory OSHA 30 certification to work on their projects. If you don't have an OSHA 30 certification, get signed

The following classes will be held at Local 113 Hall, 6310 W. Appleton Avenue, Milwaukee, WI. Please Contact the Wisconsin Laborers Training Center at 800-275-6939 for enrollment information or go online at [www.wilaborers.org](http://www.wilaborers.org)

Hoisting/ Rigging & Handsignal Refreshers: January 11, February 8

OSHA 30: January 23-26, February 20-23, March 13-17, March 20-23

First Aid/ CPR/ AED: January 6, February 3, February 10, April 10

Hazardous Waste Refreshers: January 5, February 9

up for class and get certified. Along with OSHA 30, Hoisting & Rigging/ Hand Signaling, Flagging, Concrete, Scaffold, and Forklift certifications have been a big demand from our signatory contractors.

As the new year is approaching, I want to take this opportunity to thank you for all your hard work and wish you and your family a Merry Christmas and a happy, healthy, prosperous, successful, New Year.

With kind regards,  
Anthony Neira  
Business Manager

## In Memoriam

Cindy J Tjensvold-	January 7th 2016
Jeremy R Johnston-	January 23rd, 2016
Wayne J Jacobi-	February 2nd, 2016
Oliver Paternoster-	February 24th, 2016
Peter L Galliard-	February 26th, 2016
Sigismund Gawrysiak-	March 9th, 2016
Mark A Bolli-	March 17th, 2016
Alfredo Trinidad-	March 25th, 2016
Edwin L Gaede-	March 26th, 2016
Robert F Schlak-	March 28th, 2016
Earl W Morenzi-	April 13th, 2016
Shane R Fusek-	May 14th, 2016
James R Delimat-	May 19th, 2016
Elmer E Sell-	June 5th, 2016
Alfonso Garcia-	June 28th, 2016
Ervin J Novak-	July 3rd, 2016
Larry R Adams-	July 27th, 2016
David p Burczyk-	August 15th, 2016
Antonino Miosi-	August 25th, 2016
John E Lord-	September 10th, 2016
Gene D Chatos-	September 13th, 2016
Russel Brenner-	September 17th, 2016
Melvin J Brown-	October 7th, 2016
Peter J Mandli-	October 15th, 2016
Donald E Mc Dermott-	October 22nd, 2016
Alex F Jordan-	October 31st, 2016

# Local News

## Local 140 La Crosse Business Manager Clark Jensen



Hello Brothers and Sisters of Local 140,  
As we traveled to work throughout the summer, we witnessed multiple roads and bridges being rebuilt in Local 140's ten counties. Some of these road projects are still under construction. We have had more highway work in our area than we ever have in past years! For the Laborers' that work for building contractors, that work has been steady also, moving right into the winter months, with some that will continue into next summer. Distribution work has seen a good season as well, being strong locally and statewide.  
I would like to thank our members who have given back to the community by donating their time. Local 140 has been active with the North American Squirrel Association or NASA, which was formed in order to help the physically challenged and elderly enjoy hunting and fishing opportunities and recreational activities. This year Local 140 members donated their time for the NASA Annual Woods Clean-up for the disabled hunters. I would also like to thank all Local 140 members and families that marched in this year's Labor Day Parade! Please remember to call the office and register on the out of work

list when you are laid off. You can leave a message if it is outside of office hours. Remember to check your health and pension statements that you receive from the Fund office to make sure your hours reported are correct. Also please call your Local and the Fund office when changing contact information such as address or beneficiary information. The Local can take Visa or MasterCard over the phone to pay dues and have set-up a recurring payment option if you so choose, the Local can automatically use your credit card. If you need a form for that option, let us know.

We will be hosting some training courses in the Local 140 area. The January 16<sup>th</sup> – 20<sup>th</sup> OSHA Class is already full but we have opened up two more OSHA 30 classes to be held on January 30<sup>th</sup> – February 2<sup>nd</sup> and another class March 27<sup>th</sup> – March 31<sup>st</sup>. First Aid/ CPR/ AED classes will be held on December 13<sup>th</sup>, February 2<sup>nd</sup>, and April 11<sup>th</sup>. Hoisting/ Rigging & Hand Signal Refresher will be held January 26<sup>th</sup>. If you are interested in any of these classes please contact Local 140 or the Training Center, you will need to complete an application.  
In closing, please join us at the December 6th Union Meeting/ Christmas party at 7:30 at the Boot Hill Pub and have a safe and happy holiday season.

Clark Jensen-Business Manager



For more information about how you can help N.A.S.A

North American Squirrel Association

608-234-5988

PO Box 186  
Holmen, WI 54636

Website:  
[www.nasasquirrel.org](http://www.nasasquirrel.org)

Laborers Local 140

2771 George Street  
La Crosse, WI 54603

608-788-1095

# Local News

## Local 268 Eau Claire Business Manager Jeff Dehnhoff



Hello Brothers and Sisters,  
As winter approaches I hope everyone has had a safe and successful 2016 construction season. It is getting to be that time of the year when some road projects are wrapping up, so I want to touch base on a few items regarding unemployment benefits and the out of work list. Prior to applying for unemployment benefits remember to call the hall and get on the out of work list. When applying for unemployment benefits you will be asked if you are a member of a trade union hiring hall, in good standing, and if you are on the out of work list. The Department of Workforce Development does call the hall to verify this information and we give them the information we have.

Local 268 Hiring Hall rules require anyone on the Out of Work list to re-register every 90 days to remain on the list. When you are laid off you must call the hall to be placed on the out of work list and then call every 90 days to continue to be on the list. After 90 days, if we have not heard from you, your name will be removed from the

out of work list and upon re-registration moved to the bottom. When you go back to work, please remember you must call the office and report you have returned to work. This should be done even if you will be working for only a day or two so the list is up to date each day. Only those members who are not working can be on the out of work list. If you are working at all you cannot be on the out of work list. Be advised that when referred to a contractor there may be pre-employment drug testing and if you fail the test you will be removed from the out of work list for 90 days or until assessments/ counseling/ rehabilitation requirements are completed. If you fail a second time you will be removed from the out of work list for one (1) year. A third failed test results in termination from union membership.

Also be advised that if you are terminated from employment for cause under the Laborer's Code of Performance, your referral privileges shall be suspended automatically for one month; after a 2nd termination for cause within a 24 month period referral privileges shall be suspended automatically for six months; after 3rd termination in 24 month period referral privileges shall be automatically suspended indefinitely. For the purpose of the code of performance, cause is defined as; excessive absenteeism, excessive tardiness, and lack of required skills, insubordination, and theft.

If you are referred to a job and you accept the referral but then do not show up without a valid and verifiable excuse (car accident, medical emergency, etc.) then you will be dropped from the out of work list for 30 days after which you will be put to the bottom of the referral list for which you are qualified; should a second offense occur you shall be dropped for 60 days and then put to the bottom of the out of work list; after a third offense you will be debarred from the Union.

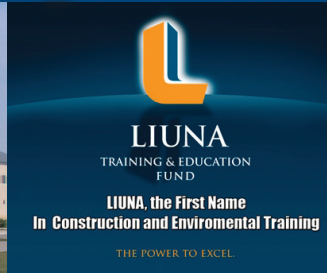
Lastly, I know it is sometimes difficult for members to travel down to the Wisconsin Laborers Training Center in DeForest. For that reason Local 268 has worked with the Training Center to get some OSHA 30 classes to be held in the Local 268 area. OSHA 30 Classes will be held February 13<sup>th</sup> -16<sup>th</sup> at the Wausau Labor Temple, February 27<sup>th</sup> – March 2<sup>nd</sup> at Local 268 hall in Eau Claire, and March 13<sup>th</sup>-16<sup>th</sup> at Local 268 in Eau Claire. These classes are limited and you must sign up for them. For more information and to sign up, please call Local 268 at (715)-835-5001. I wish you and your family a happy holiday season.

**Laborers Local 268**

**2233 Birch Street  
Eau Claire, WI 54703**

**Phone: 715-835-5001**

# Laborers' Apprenticeship and Training



Craig Ziegler, Director  
Ray Wiatt, Apprentice  
Coordinator  
Stacy Miller, Office Mgr.  
Phone 608-846-5764



**Training Director  
Craig Ziegler**

Brothers and Sisters, it is that time of year where work out in the field is winding down. It is also the time of the year that you should be looking to upgrade your skill set. You should have already received your trainer in the mail with the list of our 2016-2017 schedule. However, if you don't have it anymore, you can go onto our website: [www.wilaborers.org](http://www.wilaborers.org) to view our schedule. From there you can enter your last name and membership id # (located on your union card) to register for classes you would like to attend. You can receive your confirmation by email,

USPS mail, or both. If you have any questions about training please give us a call at 608-846-5764 or 1-800-275-6939.

I would also like to extend a warm welcome to Rachelle. Rachelle is the newest member of our staff as an Instructor and Apprenticeship Assistant. Rachelle comes from a background in Construction of various types and in various positions within those companies. I invite you to give her a warm welcome if you have a class scheduled with her and help her transition into the Wisconsin Laborers Training Center. As a reminder, look at your Training Cards to make sure you are up to date with your certifications. If you are nearing the expiration date, please contact us so that you can be as versatile as possible for your contractors and for yourselves. The more Certifications you have

the more valuable you are to our signatory contractors. This generally means more work opportunities you will have during your career as a Laborer. Be safe and I hope to see you in class this 2016-2017 training season.  
Respectfully  
Craig Ziegler

## Training Center

### Directions to Apprenticeship and Training Center

#### North of Madison:

- Take I90 East / 139 South
- Use Exit 131(Hwy. 19 west)
- Follow Hwy 19 west for 1/2 mile

#### South of Madison:

- Take I90 West / 139 North
- Use Exit 131(Hwy. 19 west)
- Follow Hwy 19 west for 1/2 mile

#### Milwaukee:

- Take I94 to
- I90 West / 139 North
- Use Exit 131(Hwy. 19 west)
- Follow Hwy 19 west for 1/2 mile

### Register for Classes on-line

To register for classes at the Laborers Training and Apprenticeship center go to the members services section of the Wisconsin Laborers website at [www.wilaborers.org](http://www.wilaborers.org).

### Wisconsin Laborers Training Center Instructor Rachelle Cota



My name is Rachelle Cota and I am very excited to be the newest instructor at the Wisconsin Laborers' Training Center. Prior to coming to the Training Center I have been working within the construction industry for over 30 years. When I was 17 years old I went to work for a Union excavating contractor working in a residential development helping with basement excavation and backfilling and setting up the project for utilities, roads, curb and gutter, and sidewalks. I have worked on a variety projects all over the United States, from interstate projects, to delivering specialized glass for skyscraper projects in major metropolitan areas. My most recent experience has been working with a large concrete block and concrete pipe manufacturer. This manufacturer also owns

numerous aggregate producing facilities and provides ready mix for residential, DOT and commercial projects throughout Wisconsin. While employed with them I helped establish a safety training program for their employees working in the field. I am a trainer authorized by MSHA and I am an instructor certified by the American Red Cross for First Aid, CPR, AED and BBP. I have an associate degree from MATC in Milwaukee for Civil Engineering with a focus on Surveying and am currently working towards associate degrees in both Environmental Engineering and Safety Engineering Technology. I truly enjoy working to help others succeed. I am looking forward to sharing my knowledge and experiences and learning from all of you as well.

Congratulations to the 46 Wisconsin Laborers listed below, who completed the apprenticeship program during the period from January 1st, 2016 to October 31st, 2016. The apprenticeship program requires 4,000 hours on the job and 400 hours of completed classroom time at the Wisconsin Laborers Training Center.

## Congratulations Laborers

Adam	Baumgart	Local 330
William	Beahm	Local 464
Robert	Bedrosian	Local 113
Michael	Brochtrup	Local 330
Ricky	Brown	Local 464
Larry	Cain JR	Local 113
Kevin	Demars	Local 330
Dakota	Dempsey	Local 464
Dylan	Dempsey	Local 464
Nestor	Diaz	Local 113
Vincent	Evans	Local 464
Mathew	Feutz	Local 113
Benjamin	Fischer	Local 464
Samuel	Goljenboom	Local 330
Kyle	Good	Local 464
Laurie	Gunther	Local 140
Jamal	Hayes	Local 113
Benjamin	Henrichs	Local 113
Jacob	Jursik	Local 140
Nathan	Kau	Local 113
Magen	Kerner	Local 464
Corey	Krull	Local 268
Garrett	Larson	Local 268
Nicholas	Lawver	Local 464
Gustav	Mahlum	Local 464
Adam	Marquardt	Local 113
Luis	Mendez	Local 113
Isidro	Mendez	Local 113
Travis	Meyer	Local 268
Brian	Noltner	Local 464
Zackori	Ory	Local 330
Travis	Owen	Local 330
Marques	Paige	Local 113
Michael	Paulson	Local 268
Michael	Remy	Local 464
Michael	Running	Local 140
William	Schoen	Local 464
Jerimiah	Schultz	Local 268
Randy	Schuster	Local 330
Jamaal	Stokes	Local 113
Anthony	Swift	Local 113
Daniel	Ten Cate	Local 113
David	Wagabaza	Local 464
Joseph	Weir	Local 464
Cody	Zivkovich	Local 113
Mike	Zuba	Local 113



## Local 330 Menasha Business Manager Tony Marcelle



2016 is almost over and it has been a very good year for work. Work hours are up over last year. 2017 looks like it will be strong as well, at least on the Building side. As far as Heavy & Highway work goes, the State says there will be less work to bid. So what is the problem with this, not enough money for projects and an unwillingness of the politicians in Madison to fix it? So do nothing, all in the name of “no new taxes” or how about user fees thru an increase in gas tax. Those that use more...pay more, sounds fair to me. Well, they will continue to wait and do nothing until our roads need more than just a repair, they will need replacing! This is a problem that has been in front of them for a long time and there is some political in-fighting about it.

Let's hope the next State Budget addresses it head-on. When it comes to infrastructure it's everyone's problem, it is not Democrat issue or Republican issue, it affects our States. We all rely on safe roads and bridges.

Local #330 does have a spring outage scheduled for Point Beach this coming March 2017. We also have some classes this winter at our hall. Check the *Trainer* for dates or if you have questions about training classes that will help you, give us a call.

**Laborers' Local 330**  
886 W. Airport Road  
Menasha, WI 54952

**Phone: 866-340-0330**

**Website: [www.laborerslocal330.org](http://www.laborerslocal330.org)**



(Picture left and below) On October 12th, 2016 schools from all around the Green Bay area participated in a Unionized Trade Career Day Event that was held at the Shopko Convention Center. This event was hosted by the North East Wisconsin Building and Construction Trades Council, and was well attended with 700+ students participating. This was a hands on event, with all the different Unions participating. Local 330 members poured a concrete pad prior to the event. During the event Local 330 members interacted with students, educating them about the craft, proper personal protective equipment (PPE), and the proper way to use a compressed air jackhammer. This was a great opportunity to get kids excited about a potential career in the building trades.



**Check out our website at:**  
[www.laborerslocal330.org](http://www.laborerslocal330.org)

# Local News

## Local 464 Madison Business Manager Dan Burke



Hello Local 464 members. Work hours along with health & pension hours are up, and our signatory contractors have had some good contracts awarded this 2016 construction season. Building projects, sewer & water projects, and heavy highway projects were active all over Local 464's ten counties. From the Illinois Stateline to Madison, and beyond, it has been a good year for Local 464 Laborers.

This was the second year Local 464 participated in "Take Kids Fishing" and "Kids Build Wisconsin". The take kids fishing event is sponsored by The Building & Construction Trades Council of South Central Wisconsin and Co-sponsored by the Union Sportsmen's Alliance. It is a free event, open to the public, but limited to the first 150 kids. Each kid that attends receives a fishing pole that they get to keep after the event. Union members introduce youngsters to the benefits of fishing and the abundance of public access opportunities available in our community.

Kids Building Wisconsin is an annual event held in Fitchburg, which focuses on getting

kids interested in the many exciting careers available in the construction industry. Local 464 has also participated in many career fairs at schools in Madison, Beloit, Whitewater, and more. At school career fairs we educate students about the opportunities to earn while you learn, in an apprenticeship, as a construction craft laborer. Apprenticeship participation has grown in local 464's jurisdiction. At our last State Construction Craft Laborers Advisory Committee our local Joint Apprenticeship Committee or JAC had reported 77 total active apprentices in Local 464's jurisdiction.

Our defense fund has been helping gain a few projects in our area. The defense fund helps our signatory contractors by a commitment of funds ahead of the bidding process, to help our signatory contractors compete against non-union competition. The prevailing wages changes that took place the last legislative session will become law January 1<sup>st</sup> 2017. Local 464 will be monitoring upcoming bids and will continue to work with our signatory contractor to remain competitive.

Brothers and Sisters the results of this past election cycle will not help us as a Labor Union. The possibility of more legislative battles are foreseeable. We will continue to keep our members informed on what issues may affect our industry and our livelihoods. We will need to stay strong, keep the faith, stand

together to let our voices heard. This is our State too! And we will continue to hold politicians accountable for their actions. We have contract negotiations for Building, Heavy Highway and Sewer & Water in 2017. Please come to monthly meetings to stay updated on these negotiations. This will be a busy 2017 Season. Thanks again to our Members!  
Dan Burke

### Local 464 Officers

**Daniel Burke**  
Business Manager

**Rod Meyer**  
Secretary/Treasurer

**Toby Meicher**  
President

**Kent Miller**  
Vice President

**Jim Foye**  
Recording Secretary

**Nick Henke**  
Sgt-At-Arms

**Pam Meyer**  
Auditor

**Angie Loncar**  
Auditor

**Jason Nielsen**  
Auditor

**Daniel Burke, Rod Meyer,  
Toby Meicher, Kent Miller  
Brian Casper, Dean Hackl and Jim Foye**  
Executive Board

**Judy Kinnaird  
Diana Kirkpatrick**  
Administrative Staff

**Reminder  
Next Retiree Luncheon  
will be held on  
January 18th, 2017  
at Local 464  
at 11:30 am**

# 2017 Accuplacer Testing Dates - 2017 Membership Meetings

The strength of our union is built on the active participation of members. Attending monthly local meetings is the best way to protect what you have and make sure the benefits of union membership are available to the next generation. When you attend local meetings, you can find out what the union is doing, have a voice in decision-making, and meet fellow members who may be able to give you useful tips for navigating our industry. Be active in your union.

## 2017 Membership Meetings

### **Local 113 - 6310 West Appleton Avenue, Milwaukee**

January 25 – 7:00 pm  
February 22 – 7:00 pm  
March 22 – 7:00 pm

### **Local 268 – 2233 Birch Street, Eau Claire**

January 6 – 7:00 pm  
February 3 – 7:00 pm  
March 3 – 7:00 pm

### **Local 330 – 2828 N. Ballard Rd, Appleton**

January 10 – 7:00 pm  
February 14 – 7:00 pm  
March 14 – 7:00 pm

### **Local 330 – Informational Meetings**

January 4 – 6:00 pm (50 E. Bank St, Fond du Lac)  
February 15 – 6:00 pm (1570 Elizabeth St, Green Bay)  
March 1 – 6:00 pm (50 E. Bank St, Fond du Lac)

### **Local 1091 – 2002 London Road, Duluth, MN**

January 19 – 7:00 pm  
February 16 – 7:00 pm  
March 16 – 7:00 pm

### **Local 140 – Boot Hill Pub, 1501 St. Andrew St, La Crosse**

January 3 – 7:30 pm  
February 7 – 7:30 pm  
March 7 – 7:30 pm

### **Local 268 Retiree & Informational Meetings**

January 18 – 11:00 am (Retiree - Eau Claire Labor Temple)  
January 18 – 11:00 am (Retiree – WI Rapids Labor Hall)  
January 18 – 11:00 am (Retiree – Wausau Labor Hall)  
March 6 – 6:30 pm (Informational – WI Rapids Labor Hall)  
March 7 – 6:00 pm (Informational – Wausau Labor Hall)  
March 15 – 11:00 am (Retiree – Eau Claire Labor Temple)  
March 15 – 11:00 am (Retiree – WI Rapids Labor Hall)  
March 15 – 11:00 am (Retiree – Wausau Labor Hall)

### **Local 464 – 1438 N. Stoughton Rd, Madison**

January 4 – 7:00 pm  
February 1 – 7:00 pm  
March 1 – 7:00 pm

## 2017 APPRENTICESHIP TESTING DATES

Do you know someone interested in a career in the construction trades? Accuplacer testing for the Laborers' Apprenticeship program will be held on the following dates:

### Laborers' Local 113 – Milwaukee

Test Location: 6310 W. Appleton Ave  
Milwaukee, WI 53210

Dates: February 7, 2017  
March 7, 2017  
April 4, 2017

### Laborers' Local 268 – Eau Claire

Test Location: 318 S. 3<sup>rd</sup> Avenue  
Wausau, WI 54401

Dates: March 16, 2017  
April 12, 2017

### Laborers' Local 330 – Menasha

Test Location: 886 W. Airport Road  
Menasha, WI 54952

Dates: February 16, 2017  
March 8, 2017  
April 5, 2017

### Laborers' Local 140 – La Crosse

Test Location: AmericInn Hotel & Suites  
125 Buol Road, Rm 100  
West Salem, WI 54669

Dates: February 13, 2017  
March 13, 2017  
April 10, 2017

### Laborers' Local 268 – Eau Claire

Test Location: 2233 Birch Street  
Eau Claire, WI 54703

Dates: February 17, 2017  
March 17, 2017  
April 13, 2017

### Laborers' Local 464 – Madison

Test Location: 4633 LIUNA Way  
DeForest, WI 53532

Dates: February 9, 2017  
March 9, 2017  
April 6, 2017

- Testing begins at 9:00 a.m. sharp - applicants arriving after 9:00 will not test
- Applicants must be at least 18 years old and have a valid photo ID
- There are no fees for taking the test and no pre-registration is necessary

Questions? Call the Apprenticeship office – 608.846.5768 or e-mail: [rwiatt@wislaborers.org](mailto:rwiatt@wislaborers.org)

# Honoring Wisconsin Laborers for their years of service and their commitment

## 25 Year Members

113	John Allison	113	Morris Amidon	113	Jerold Archiquette	113	Alan Barbieri
113	William Copus	113	Jeffrey Hohl	113	Martin Hrenak	113	Roy Johannes
113	Marie Kamin	113	Kenneth Manthey	113	Bennie McClellan	113	Chad Schreiber
113	Peter Slupianowski	113	Jonathan Teeters	113	Michael Ziehme	140	Verland Casper
140	Randina Clements	140	John Dahl	140	Randy Harms	140	Daniel Kundy
140	Timothy Lyga	140	Jeffrey Paulson	140	Samuel Arentz	140	Jerry Bettesworth
140	Floshell Brewster	140	David Goodman	140	Donald Johnson	140	Lyle Lemke
140	Jeff Ott	140	Allan Printz	140	William Rask	140	Timothy Steele
140	Robert Trocinske	140	Keith Trumm Jr	140	Randall Williams	140	William Arentz
140	Douglas Benson	140	Robert Bremmer	140	Robert Farrington	140	Dale Grulkowski
140	Clark Jensen	140	Robert Lindsay	140	John Boland	140	Dennis Hochtritt
140	Kenneth Koval	140	Kevin Koval	140	Michael Nauman	140	Michael Endres
140	Hugh Gresens	140	Jeffrey Merwin	140	Frank Rick	268	Cindy Anderson
268	William Boyle	268	Brian Dehnhoff	268	Mark Eheler	268	David Elmer
268	Robert Kaatz	268	Paul Lenzner	268	Gary Long	268	Larry Nyhus
268	Darlene Ohlmann	268	Douglas Perkins	268	David Prill	268	Rodney Raatz
268	Thomas Thompson	268	Bernadine Trawicki	268	Laverne Voigt, SR.	268	Rick Wilbur
268	Robert Wilbur	268	Wallace Winberg	330	Timothy Miller	330	Erich Birkholz
330	James Braun	330	Randall Buckholt	330	Irvin Cleland Jr	330	Cassandra Gerard
330	Darren Meyer	330	Daniel O'Connor	330	Robert Reed Jr	330	Ronald Rueden
330	Mark Schleis	330	Thomas Schmitt	330	Lee Schmitz	330	Timothy Schoelzel
330	Carl Seaman	330	Daniel Tauscher	330	Jo Ann Unger	330	Nicholas Van Straten
330	Greg Virtues	330	Dennis Vogel	330	Everett Vossekuil	330	Kenneth Wagner
330	Rick Wippermann	330	Bart Young	464	Brian Amble	464	David Arms
464	Grace Buswell	464	Humberto Casique	464	Jay Davis	464	Dean Faulkner
464	Robert Fisher	464	Michael Gleichauf	464	Donald Hankel	464	Suzanne Heeren
464	Larry Karow	464	Bruce Larson	464	Roderick Meyer	464	Jeffrey Nachreiner
464	James Nelson	464	Jerry Noble	464	Paul Probst	464	Steven Slinde
464	Olaf Storlid	464	John Swank	1091	Raymond Bayard	1091	Bruce Currie
1091	Paul Kangas	1091	Ramon Santana				

## 30 Year Members

140	Robert Allen	140	Donald Burke	140	Martivan Cook	140	Douglas Koss
140	Terry Sylla	140	Roland Arttus	140	Terry Dearman	140	Charles Gleason
140	Dale Greeno	140	Norman Kuderer	140	Kale Kvistad	140	Wayne McConn
140	Lawrence Meyer	140	Richard Olson Sr	140	Donald Roetter	140	Gary Sanders
140	Richard Vieth	140	Anthony Folcey	140	Robert Holte	140	Ronald Laufenberg
140	Daniel Pedretti	140	Mike Hirschuber	140	David Martin	140	Richard Bright
140	Walter Koss	1091	Kenneth Graves	1091	Judith Schmidt	1091	Jeffrey Larson
1091	Frank Fudally	1091	Bradley Bukovich	1091	Scott Zinnecker	1091	Eugene Harvey
1091	Albin Hansen	1091	Andrew Moss	1091	Jerald Moore	1091	Douglas Allen
464	Gary Alexander	464	Arturo Estrada	464	Jay Farley	464	Gregory Farlinger
464	Leroy Faulkner	464	Scott Greenleaf	464	Allan Heffner	464	Gregory Hegemann
464	Xavier Herrera	464	Jimmy Hudson Jr	464	Glenville Johnson Jr	464	Duane Martinson
464	James McCann	464	James Meicher	464	Steven Meyer	464	Glen Simplot
464	Kevin Slagg	113	Scott Anderson	113	Edward Bizzak	113	Wayne Duplanty
113	John Gross	113	Thomas Hollman	113	Fredrick Huffman	113	William Jonas
113	Allen Krzykowski	113	Joseph Mueller	113	Jay Patti	113	Antonio Perez Jr
113	Kundy Rangel	113	Christopher Rouse	113	Dan Rush	113	Walter Sharlow
113	Antonio Silenzi	113	Paul Smet	113	Robert Sobiesczyk	113	James Thoennes
113	Michael Wilburn	268	Joseph Allard	268	Jeffrey Andres	268	Douglas Christianson
268	Darryl Doughty	268	Rodney Dupee	268	Roger Fjelstad	268	Roger Iwen
268	Jeffrey Johnson	268	Daniel Kensmoe	268	Sandra Leavens	268	Gayle Lewis
268	Thomas Lund	268	Lon Patterson	268	Roger Pierson, Jr	268	James Scheunemann
268	Russell Sorenson	268	Richard Thiel, Jr	330	Dennis Bomberry	330	Joseph Fritsch
330	Jerome Klas	330	C David Smit	330	Dean Van Straten	330	Robert Vanden Plas Jr
330	Robert Yandre Jr	330	Alvin Cole Sr	330	Peter Czaikowski	330	Randal Disterhaft
330	Patrick Fitzgerald	330	Dallas Kienast	330	Mark Kraus	330	James Mleziva
330	Kevin Mohawk	330	Steven Murphy	330	Michael Pierre	330	Gene Swanke
330	Ronald Takacs	330	Dennis Van Boxel	330	Kevin Van Straten	330	Thomas Vanderlois
330	Terrence Wolf						

## 35 Year Members

140	Jerry Edberg	140	Roger Roellich	140	Gary Sather	140	Derrick Whitehead
140	Tim Ballwann	140	Larry Coleman	140	Danny Deckert	140	Daniel Harlos
140	Michael Knutson	140	Charles McLendon	140	Dennis Warthan	140	Donald Getter
140	Kevin Lee	140	Zenon Sobczak	140	James Walters	140	Bernard Esser
140	David Robertson	140	Gary Rommes	140	Gerald Trentin	140	Jon Woodworth

# to fight for good wages and benefits and grow the Wisconsin Laborers Union

## 35 Year Members (Continued)

140	Donald Baardseth	140	Dean Smerud	140	Donald Stoddard	140	Alfred Vento
1091	Jackie Salo	1091	Jon Moore	1091	Gregory Runions	464	Maureen Bosshard
464	Dale Drake	464	Thomas Fisher	464	John Giddings	464	Charles Hughes
464	Thomas Klein	464	Gary Lee	464	Peter Tschannen	268	Daniel Kniess
268	Mark Matakovich	330	David Zeitler	330	Michael Grater	330	Ronald Mariearty
330	Eugene Panzer	330	Marc Patri	330	Ronald Thimmig		

## 40 Year Members

140	James Benrud	140	Robert Ealey	140	Sidney Helgesen	140	Carson Jotham
140	Robert Kohlmeier	140	Orville Koopman	140	Tim Manning	140	DeWitt Schedler
140	Alan Stockel	140	Don Vian	140	William Kast	140	Craig Spies
1091	Michael Misun	464	Michael Davis	464	Kathleen Garlock	464	Michael Garrett
464	Gerold Goecks	464	Robert Ohm	464	Michael Ryan	464	Jeffrey Weaver
113	Elroy Andrus	113	David Ashley	113	James Barry	113	Kenneth Bastle
113	Richard Bull	113	Richard Degenstein	113	Reuben Fischer Jr	113	Frank Hall
113	Gary Heyel	113	John Krauss	113	Lyle Forge	113	Robert Luedke
113	George Luedtke	113	Jerry Murphy	113	Dennis Niesl	113	Edmund Scheffel
113	Dennis Skornia	113	Paul Smith	113	Gerald Sorano	268	James Bugbee, Sr
268	John Clark	268	Larry Dye	268	James Henke	268	James Mishler
268	John Niehaus	268	David Pond	268	Robert Tank	268	Harvey Tonne
268	Sylvester Williams	330	Dennis Counard	330	James Wierzba	330	James Baugh
330	Carlton Evraets	330	Richard Geneske	330	Daniel Jannusch	330	John Nettesheim
330	Steven Scheidt	330	Warren Stubb				

## 45 Year Members

140	Virgil Schmitz	140	James Sheckler	140	Clarence Nordin	140	Larry Oliver
140	Gerald Tschumper	140	Roger Waletzko	140	Lyle Anderson	140	Darwin Beck
140	Richard Bufflington	140	Robert Hansen	140	Bernard Sasse	464	Richard Annen
464	Jerome Cefalu	464	Hubert Heller	464	Richard Richter	464	James Tennyson
268	Loren Bloyd	268	Vernon Dunkel	268	Keith Gayken	268	Harlan Hanson
268	James Hetrick	268	Douglas Krisik	268	Thomas Tobin	268	Glenn Werlein
330	James Gauthier	330	Robert Plonsky	330	Gerald Entringer	330	Michael Finnel
330	Thomas Krantz	330	Robert Malewski	330	Robert Miller	330	Wayne Moureau
330	Donald Mueller	330	Raymond Petrusky	330	Marvin Shulfer		

## 50 Year Members

140	Andrew Tylka	140	Sidney Welda	140	Ralph Krause	1091	Richard DeDomines
464	Roger Amacher	464	Joseph Ballweg	464	James Flippin	464	Thomas Gorman
464	Fred Koehler	464	Richard Lentz	464	Donald Miller	464	Don Moe
464	Donald Pederson	464	Paolo Stillone	464	Arnold Zautke	113	Ernest Bankert
113	Loundry Berry	113	Paul Boegel	113	Charles Broughton	113	Melvin Brown
113	James Dix	113	Dennis Felician	113	Garmon Harrison	113	Joseph Kennedy
113	Robert Klumb	113	Robert Knetter	113	Victor Kraft	113	Harry Leslie
113	Richard Mill	113	John L O'Kimosh	113	Duane Pohl	113	Richard Rozzoni
113	William Ruelle	113	Eugene Turcotte	113	Gary Vandenboom	113	Bernard Vann
113	James Windsor	113	John Zelechowski	113	Conrad Zielski	268	Roger Aschenbrenner
268	Raymond Copeland	268	Gene Cottrell	268	James Griglak	268	Everett Kniess
268	Dale Krug	268	Edward Leavitt	268	Jerold Manlick	268	Dale Olson
268	Ronald Peters	268	Darrell Strandberg	330	Gary Peterson	330	Eugene McEvoy
330	Donald Sebo	330	Frederick Delzer	330	Ronald Smith	330	Harlan Basten
330	Gale Zietlow	330	Paul Jacobi	330	Otto Mueller Jr	330	Joseph Pelishek
330	Dennis Alfson	330	Daniel Newby	330	Wallace Ramminger	330	Gary Peterson



Local 464 Gold Card Banquet

# 50+ Year Members

## 50+ Year Members

1091	Daniel Otto	51yrs	1091	Donald Krisak	52yrs	1091	Thomas Sutarik	53yrs
140	Kenneth Nedvidek	55yrs	140	Royce Olson	55yrs	464	Steven Bell	55yrs
464	Kenneth Bortz	55yrs	464	Gerald Cummings	55yrs	464	Robert Geier	55yrs
464	Vernon Geiger	55yrs	464	John Mehtala	55yrs	464	Francis Schulenberg	55yrs
464	William Swenson	55yrs	268	Jerome Bisek	55yrs	268	Arnold Boehning	55yrs
268	Joseph Larson	55yrs	268	Gilbert Rice	55yrs	330	Leonard Firkus	55yrs
330	Jerry Muto	55yrs	330	Kenneth Sandor	55yrs	330	Charles Steinberg	55yrs
330	Ronald Hendricks	55yrs	464	Dennis Justman	60yrs	464	Robert Lee	60yrs
113	James Carroll	60yrs	113	Kenneth Eichstaedt	60yrs	113	George Glumac	60yrs
113	Milton Griepentrog	60yrs	113	Michael Mouradian	60yrs	113	Karl Nielsen	60yrs
113	Charles Putz	60yrs	113	Robert Riemer	60yrs	113	William Simpson	60yrs
268	Bernard Fetzter	60yrs	330	Raymond Raml Jr	60yrs	330	Robert Reifsnider	60yrs
113	Joseph Galioto	61yrs	113	William Johnson	61yrs	113	Robert Kalmus	61yrs
113	Frank Kierzek	61yrs	113	Frank Lamp	61yrs	113	Melvin Martina	61yrs
113	Thomas Wells	61yrs	113	Thomas Galioto	62yrs	113	Calvin Pitel	62yrs
113	John Resch	62yrs	113	Gilbert Lamp	63yrs	113	Alex Nigro	63yrs
113	Forest Barnes	64yrs	113	Richard Devalk	64yrs	113	Joseph Leinbeck	64yrs
113	Peter Mandli	64yrs	113	Ronald Boesel	65yrs	113	Edward Dunn Jr	65yrs
1091	George Kulus	66yrs	113	Carmello Caputa	66yrs	113	Peter Chapman Jr	66yrs
113	Charles Merkel	66yrs	113	Melvin Pordon	66yrs	113	Michael Ceranski	67yrs
113	George Schmidt	67yrs	113	Lee Tiegs	68yrs	113	Bill Amenda	69yrs
113	William Hicks	69yrs	113	Stanley Peternell	69yrs	113	Leonard Sura	69yrs
113	Walter Werner	69yrs	464	Sol Zaichick	70yrs	113	George Wendlandt	70yrs

Local 268 members Jerry Manlick and Dale Olson 50 years of service



Local 330 member Gary Peterson 50 years of service



Local 140 member Bernie Sasse 50 years of service



Local 113 member Stanley Peternell 69 years of service



For more membership photos please go to our website:

[www.wilaborers.org/news/membershippictures](http://www.wilaborers.org/news/membershippictures)

# LiUNA!

Feel the Power

Wisconsin Laborer, page 14

# Local News

## Local 1091 Duluth, MN (Douglas, Bayfield, and Ashland) Business Manager Dan Olson



After the November 8<sup>th</sup> election I called a colleague of mine in Washington, DC and he was quick to remind me that Unions have been on the defense for our entire careers. With that being said we, as Laborers, need to ban together as a strong united Union moving forward. What do we do now? We need to organize and mobilize collectively, protect our wages, benefits, and training programs. In the next construction season we will face the virtual elimination of prevailing wage and the implementation of Wisconsin "Right-to-Work" legislation. Although they both create problems, they also present challenges in the next year as well.

Here at Local 1091, we will meet these challenges with solutions and constructive ideas that will benefit the men and women of our great Union. With "Right-to-Work" comes change but, good conversation among us as Laborers' and our signatory contractors is something that we need to do. So let's move on and work hard at

doing what we do as Skilled Construction Craft Laborers.

In the next two (2) years we are hoping to have good work for our members. There are highway projects in Superior, a \$30 million dollar upgrade to the Calumet Refinery, and a successful advisory referendum will hopefully see \$120 million in an exposition district in downtown Superior. I will be bringing this request to the WI legislator as co-chair to Superior Days in Madison to be held February, 2017. We have a new St. Luke's clinic being built in Ashland along with 3 Kwik Trip stores. In addition to all this, we also have contract negotiations next spring. Please contact our office with any suggestions you would like to see in our contract bargaining process.

Now I need your help. I need you engaged in your union. Be a part of the conversations regarding your Union. And most of all, you need to Feel the Power, Be the Power, and Use the Power to grow our great Union.

I want to wish everyone a great & safe holiday season, including a Merry Christmas or Happy Holiday, and a safe and prosperous New Year.

In Solidarity, I remain  
your Business Manager  
Dan Olson

Laborers' Local 1091  
2002 London Road  
Duluth, MN 55812

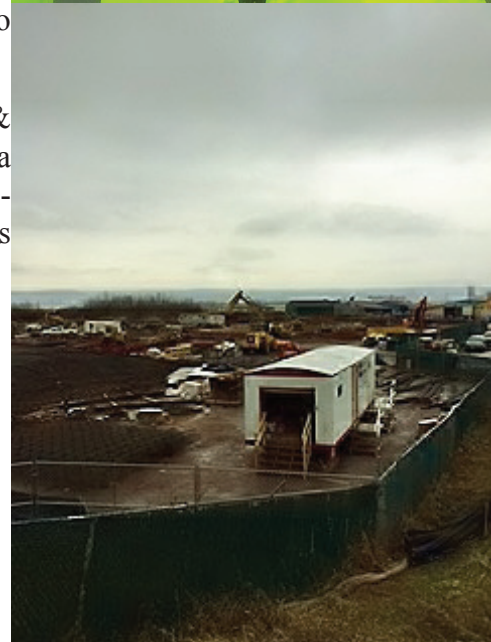
Phone: 218-728-5151

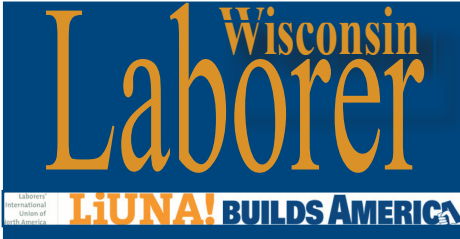
Website: [www.liunalocal1091.org](http://www.liunalocal1091.org)

### REMINDER:

**LOCAL 1091 FOOD DRIVE**  
We are collecting non-perishable items through December 23rd, 2016

**UNION MEETING  
HOLIDAY GATHERING**  
December 15th, 2016 7:00pm





Non-Profit Org.  
U.S. Postage  
Paid  
Permit No. 300  
Madison, WI

Wisconsin Laborers' District Council  
4633 LIUNA Way, Suite 101  
DeForest, WI 53532



# District Council and Local Union Directory

## Wisconsin Laborers' District Council

John Schmitt, President and Business Manager  
4633 LIUNA Way, Suite 101  
DeForest, WI 53532  
Phone: 608-846-8242  
Fax: 608-846-5460  
Website: [www.wilaborers.org](http://www.wilaborers.org)

## Laborers' Local 113

Tony Neira, Business Manager  
6310 W. Appleton Ave.  
Milwaukee, WI 53210  
Phone: 414-873-4520  
Fax: 414-873-5155  
website: [www.liuna113.org](http://www.liuna113.org)

## Laborers' Local 140

Clark Jensen, Business Manager  
2771 George St.  
La Crosse, WI 54603  
Phone: 608-788-1095  
Fax: 608-788-6082

## Laborers' Local 268

Jeff Dehnhoff, Business Manager  
2233 Birch Street  
Eau Claire, WI 54703  
Phone: 715-835-5001  
Fax: 715-835-4098

## Laborers' Local 330

Tony Marcelle, Business Manager  
886 W. Airport Rd.  
Menasha, WI 54952  
Phone: 920 722-2104  
Fax: 920 722-2105  
website: [www.laborerslocal330.org](http://www.laborerslocal330.org)

## Laborers' Local 464

Dan Burke, Business Manager  
1438 N Stoughton Rd.  
Madison, WI 53714  
Phone: 608-244-6400  
Fax: 608-244-6540  
Toll-Free: 1-800-362-4442

## Laborers Health and Pension Fund

Zenith American  
4633 LIUNA Way, Suite 201  
DeForest, WI 53532  
Phone: 1-800-397-3373  
Fax: 608-846-3192  
website: [www.zenith-american.com](http://www.zenith-american.com)

## Building Trades United Pension Fund

(Milwaukee Pension Fund)  
500 Elm Grove Road  
Elm Grove, WI 53122  
Phone: 1-800-433-8570  
Fax: 262-784-8598  
website: [www.thepensionfund.org](http://www.thepensionfund.org)